

New Beastly

Vulfpeck

Clarity of Cal (2025)

Music by Jack Stratton
bass: Joe Dart

Standard tuning

① = G ③ = A

② = D ④ = E

♩ = 80

Intro

N.C.

el.bs.

1 2 3 4

A

Dm7

G9

5 6

Dm7

G9

7 8

Dm7

G9

9 10

Dm7

G9

11 12

B Bass Solo 1

Dm

D-^Δ/C#

13 14

Dm7/C

Dm6/B

15 *tr* 16

Dm

D-^Δ/C#

17 18

Dm7/C

Dm6/B

19 20

C

Dm7

G9

21 22

Dm7

G9

23 24

Dm7

G9

25 26

Dm7

G9

27 28

D Bass Solo 2

Dm

D-^Δ/C#

(bend if you don't have enough frets!)

29 30

Dm7/C

Dm6/B

8va

3

Dm

8va

D-^Δ/C#

8va

Dm7/C

8va

tr

Dm6/B

E

Dm7

G9

Dm7

G9

tr

Dm7

G9

Dm7 G9

43 44

Musical notation for measures 43 and 44. Measure 43 is marked with a Dm7 chord and contains a sequence of eighth notes. Measure 44 is marked with a G9 chord and contains a sequence of eighth notes, ending with a double bar line and a repeat sign.

F Bass Solo 3

Dm D-^Δ/C#

45 46

Musical notation for measures 45 and 46. Measure 45 is marked with a Dm chord and contains eighth notes with a '0' (open string) and an accent (>). Measure 46 is marked with a D-^Δ/C# chord and contains eighth notes with accents (>).

Dm7/C Dm6/B

47 48

Musical notation for measures 47 and 48. Measure 47 is marked with a Dm7/C chord and contains eighth notes. Measure 48 is marked with a Dm6/B chord and contains eighth notes.

Dm

49

Musical notation for measures 49 and 50. Measure 49 is marked with a Dm chord and contains eighth notes. Measure 50 is marked with a Dm chord and contains eighth notes, ending with a fermata and a trill-like flourish.

D-^Δ/C#

50

Musical notation for measures 50 and 51. Measure 50 is marked with a D-^Δ/C# chord and contains eighth notes. Measure 51 is marked with a D-^Δ/C# chord and contains eighth notes, ending with a fermata and a trill-like flourish.

Dm7/C Dm6/B

51 52

Musical notation for measures 51 and 52. Measure 51 is marked with a Dm7/C chord and contains eighth notes. Measure 52 is marked with a Dm6/B chord and contains eighth notes, ending with a fermata and a trill-like flourish.

Dm

53

Musical notation for measures 53 and 54. Measure 53 is marked with a Dm chord and contains eighth notes. Measure 54 is marked with a Dm chord and contains eighth notes, ending with a fermata and a trill-like flourish.

D-^Δ/C#

54

Musical notation for measures 54 and 55. Measure 54 is marked with a D-^Δ/C# chord and contains eighth notes. Measure 55 is marked with a D-^Δ/C# chord and contains eighth notes, ending with a fermata and a trill-like flourish.

Dm7/C

55

Musical notation for measures 55 and 56. Measure 55 is marked with a Dm7/C chord and contains eighth notes. Measure 56 is marked with a Dm7/C chord and contains eighth notes, ending with a fermata and a trill-like flourish.

Dm6/B

56

Musical notation for measure 56, bass clef, Dm6/B chord. The staff contains a sequence of eighth notes: F2, C3, G2, C3, F2, C3, G2, C3, F2, C3, G2, C3, F2, C3, G2, C3.

Dm

57

Musical notation for measure 57, bass clef, Dm chord. The staff contains a sequence of eighth notes: F2, C3, G2, C3, F2, C3, G2, C3, F2, C3, G2, C3, F2, C3, G2, C3. The final two notes are marked with a fermata and a trill symbol.

D-^Δ/C#

58

Musical notation for measure 58, bass clef, D-^Δ/C# chord. The staff contains a sequence of eighth notes: F2, C3, G2, C3, F2, C3, G2, C3, F2, C3, G2, C3, F2, C3, G2, C3. The final two notes are marked with a fermata and a trill symbol.

Dm7/C

Dm6/B

59 60

Musical notation for measures 59 and 60, bass clef, Dm7/C and Dm6/B chords. Measure 59 contains a sequence of eighth notes: F2, C3, G2, C3, F2, C3, G2, C3, F2, C3, G2, C3, F2, C3, G2, C3. Measure 60 contains a sequence of eighth notes: F2, C3, G2, C3, F2, C3, G2, C3, F2, C3, G2, C3, F2, C3, G2, C3. Both measures feature triplets of eighth notes.

Dm

61

Musical notation for measure 61, bass clef, Dm chord. The staff contains a sequence of eighth notes: F2, C3, G2, C3, F2, C3, G2, C3, F2, C3, G2, C3, F2, C3, G2, C3. The final two notes are marked with a fermata and a trill symbol.

D-^Δ/C#

62

Musical notation for measure 62, bass clef, D-^Δ/C# chord. The staff contains a sequence of eighth notes: F2, C3, G2, C3, F2, C3, G2, C3, F2, C3, G2, C3, F2, C3, G2, C3. The final two notes are marked with a fermata and a trill symbol.

Dm7/C

63

Musical notation for measure 63, bass clef, Dm7/C chord. The staff contains a sequence of eighth notes: F2, C3, G2, C3, F2, C3, G2, C3, F2, C3, G2, C3, F2, C3, G2, C3. The final two notes are marked with a fermata and a trill symbol.

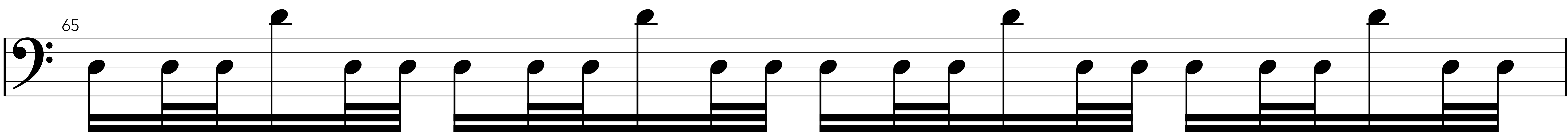
Dm6/B

64

Musical notation for measure 64, bass clef, Dm6/B chord. The staff contains a sequence of eighth notes: F2, C3, G2, C3, F2, C3, G2, C3, F2, C3, G2, C3, F2, C3, G2, C3. The final two notes are marked with a fermata and a trill symbol.

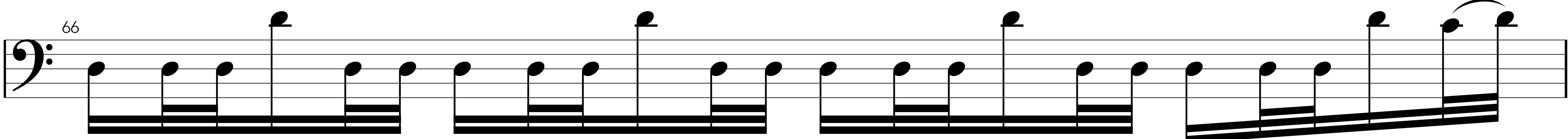
Dm

65



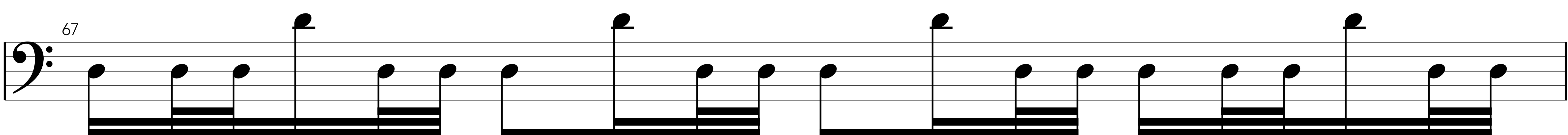
D-[^]/C#

66



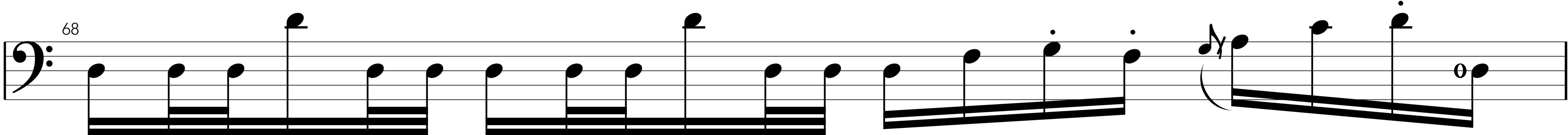
Dm7/C

67



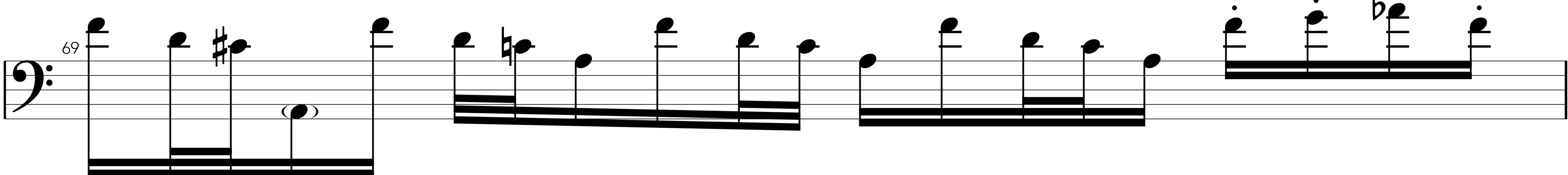
Dm6/B

68



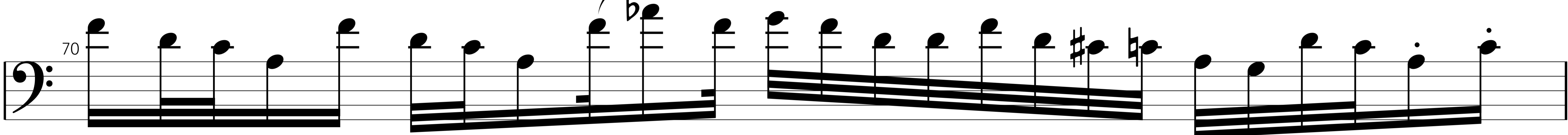
Dm

69



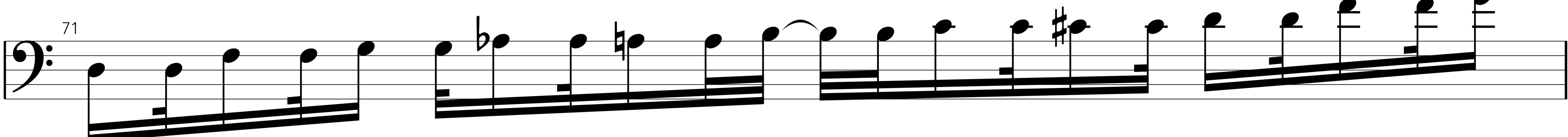
D-[^]/C#

70



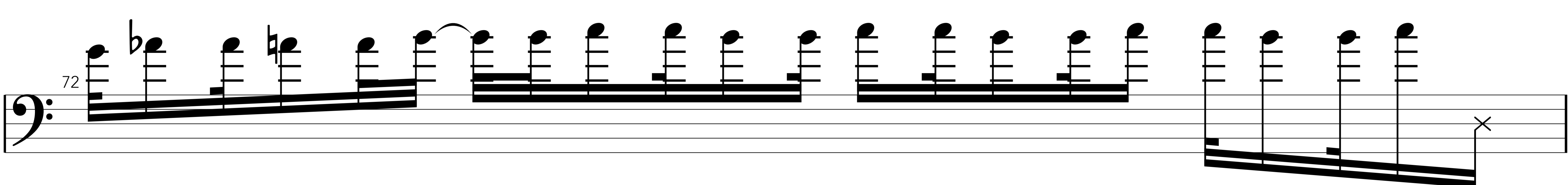
Dm7/C

71



Dm6/B

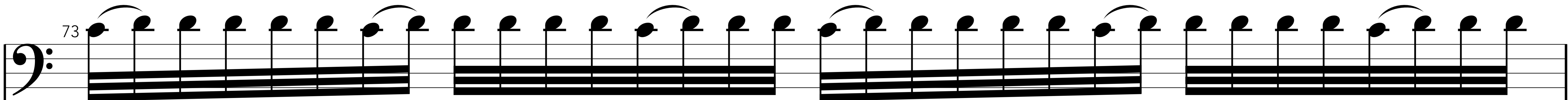
72



Dm

8va

73



D-[△]/C#

8va

74

Dm7/C

8va

75

8va

76

G

Dm7

G9

77

Dm7

G9

79

Dm7

G9

81

Dm7

G9

83